

Acer Monitor KA240Y

LIFECYCLE EXTENSION GUIDE

Contents

Table of Contents

Important Safety Notice.....3

1. Exploded Diagram.....4

2. Wiring connectivity diagram5

3. Mechanical Instruction6

4. Disassembly and Assembly SOP7

5. Troubleshooting14

6. FRU List16

Safety Notice

Any person attempting to service this chassis must familiarize with the chassis and be aware of the necessary safety precautions to be used when serving electronic equipment containing high voltage



Important Safety Notice

Product Announcement:

This product is certificated to meet RoHS Directive and Lead-Free produced definition. Using approved critical components only is recommended when the situation to replace defective parts. Vender assumes no liability express or implied, arising out of any unauthorized modification of design or replacing non-RoHS parts. Service providers assume all liability.

Qualified Repairability:

Proper service and repair is important to the safe, reliable operation of all series products. The service providers recommended by vender should being aware of notices listed in this service manual in order to minimize the risk of personal injury when perform service procedures. Furthermore, the possible existed improper repairing method may damage equipment or products. It is recommended that service engineers should have repairing knowledge, experience, as well as appropriate product training per new model before performing the service procedures.

NOTICE:

! To avoid electrical shocks, the products should be connect to an authorized power cord, and turn off the master power switch each time before removing the AC power cord.

! To prevent the product away from water or exploded in extremely high humidity environment.

! To ensure the continued reliability of this product, use only original manufacturer's specified parts.

! To ensure following safety repairing behavior, put the replaced part on the components side of PWBA, not solder side.

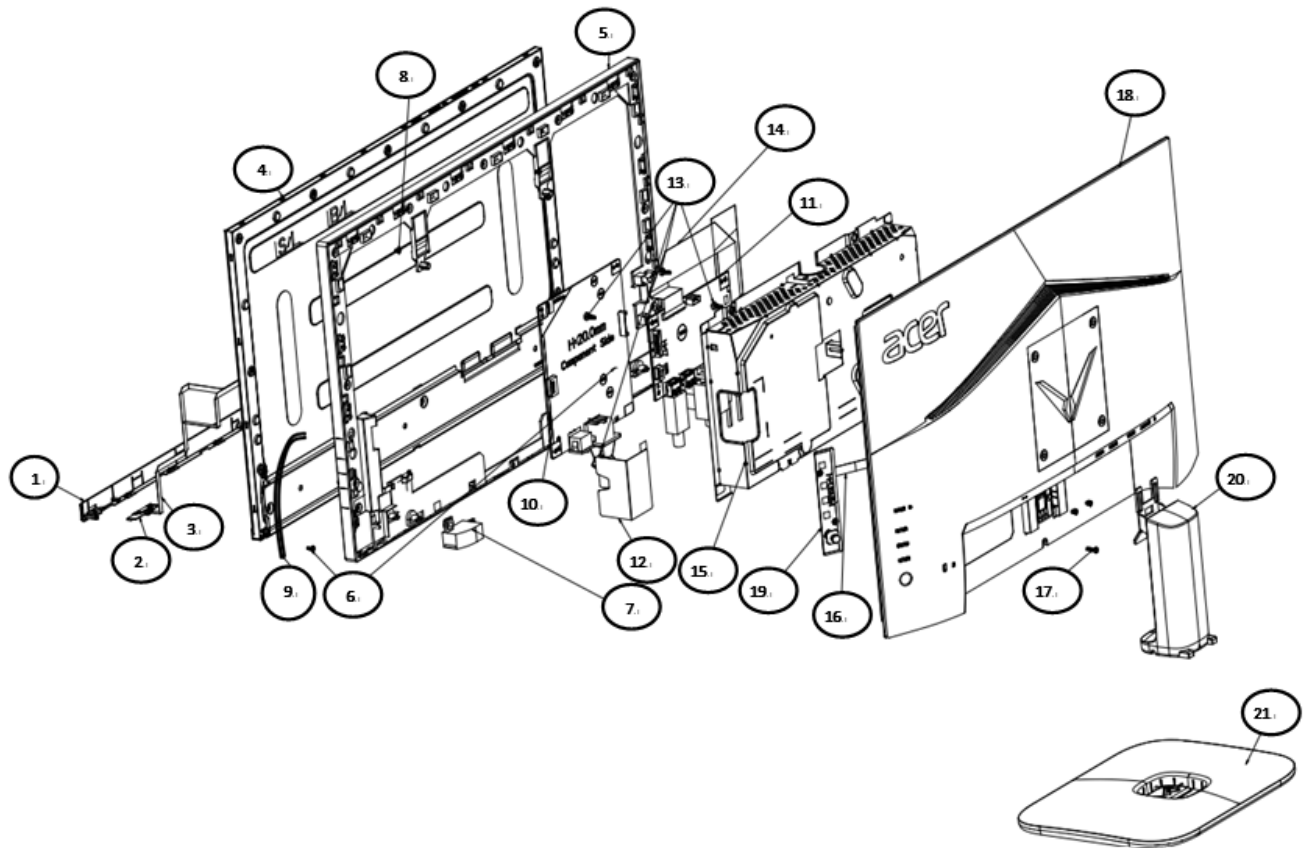
! To ensure using a proper screwdriver, follow the torque and force listed in assembly and disassembly procedures to screw and unscrew screws.

! Using Lead-Free solder to well mounted the parts.

! The fusion point of Lead-Free solder requested in the degree of 220°C.

1. Exploded Diagram

1.1 Product Exploded Diagram



Item	ODM DESCRIPTION
1	ASSY BZL
2	PCBA LED BD
3	FFC WIRE
4	LCDM
5	MID-FRAME
6	SCRW
7	SPK
8	SCRW
9	WIRE
10	PCBA SPS BD
11	PCBA IF BD
12	MYLAR
13	SCRW

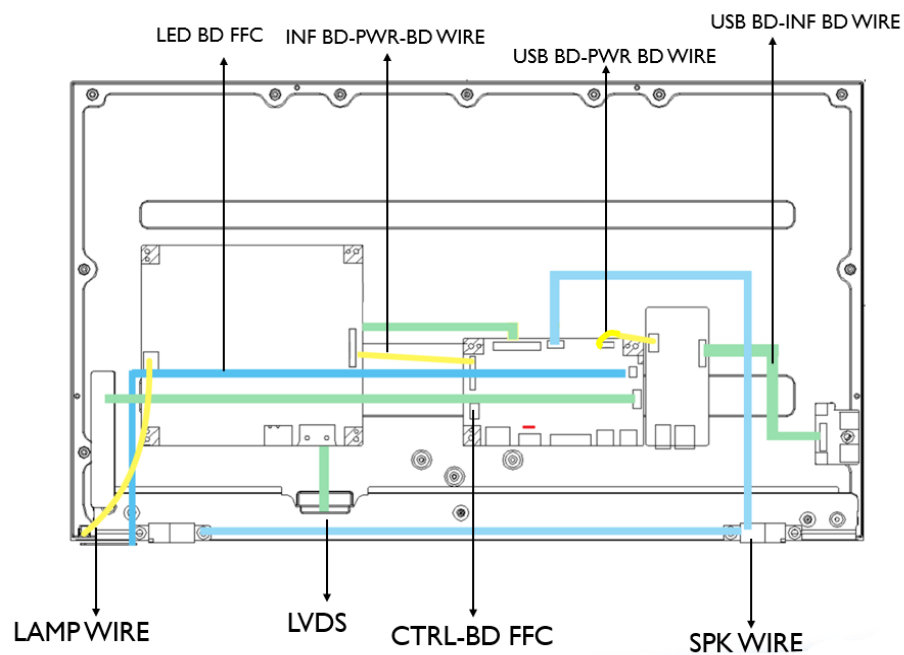
Item	ODM DESCRIPTION
14	FFC LVDS
15	ASSY SHD
16	FFC CTRL
17	SCRW
18	ASSY RC
19	PCBA CTRL BD
20	ASSY CLMN
21	ASSY BASE

2. Wiring connectivity diagram

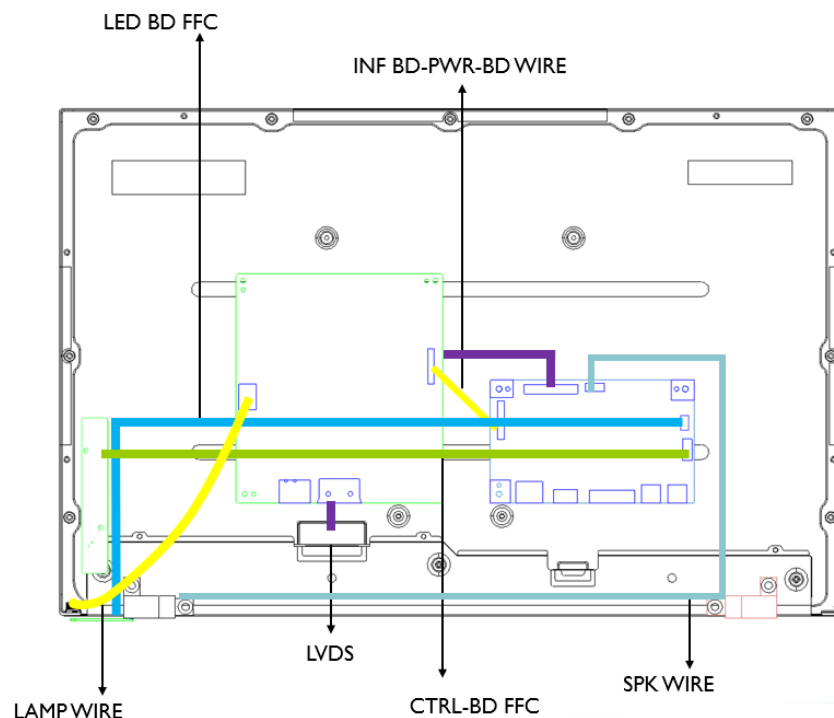
There are two types of wiring diagrams for model KA240Y. The wiring connectivity position will be different according to the ACTUAL PCBA connector position. Please base on different SKU refer to below diagram.

NOTE: INF BD= Interface Board, PWR BD=Power Board, CTRL BD= Control Board

1. SKU with USB.



2. SKU without USB.



3. Mechanical Instruction

Tools Required

List the type and size of the tools that would typically can be used to disassemble the product to a point

where components and materials requiring selective treatment can be removed.

Tool Description:

- working table
- Screw-driver: Philips-head screwdriver, Hex-head screwdriver
- Knife
- glove
- cleaning cloth
- ESD protection

4. Disassembly and Assembly SOP

KA240Y

4.1 Disassembly Procedures

Preparation before disassemble

1. Clean the room for disassemble
2. Identify the area for monitor
3. Check the position that the monitors be placed and the quantity of the monitor ;prepare the area for material flow; according to the actual condition plan the disassemble layout
4. Prepare the implement, equipment, materials as bellow:
 - 1) working table
 - 2) Screw-driver: Philips-head screwdriver, Hex-head screwdriver
 - 3) knife
 - 4) glove
 - 5) cleaning cloth
 - 6) ESD protection



After unplugging the power cord, the power board still have power energy. Please pay attention when disassembling/assembling.

S1

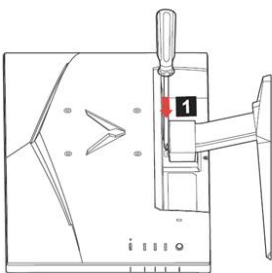
Disassemble the RC, stand and base

Before Disassembling & Assembling, monitor need to be put on the sponge and the Insulation glove must be wore during the process.

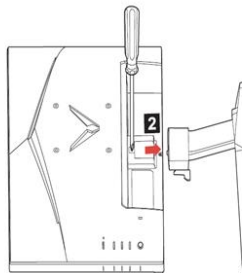
Disassemble base and column from the RC(Rear Case).
Unlock RC center screw and as picture 2.
Disassemble RC from monitor.

PICTURE 1

1. Use a screwdriver to press the release button.



2. With release button pressed, remove the stand base from the monitor.



PICTURE 2

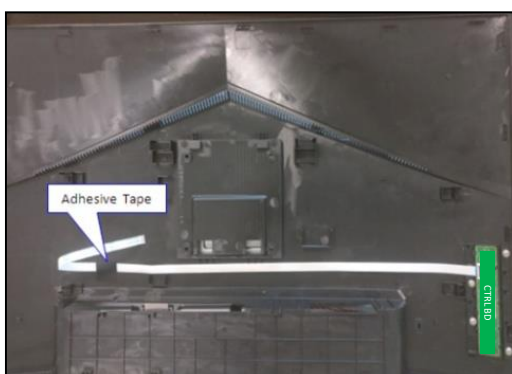


S2

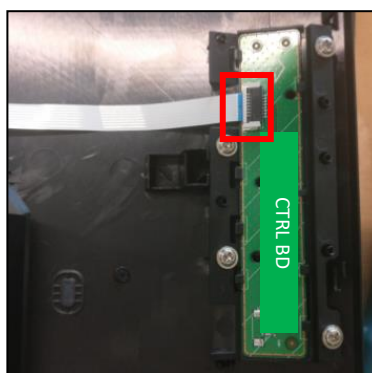
Disassemble FFC Ctrl from the PCBA.

Tear off the adhesive tape and tear off the FFC CTRL on the RC as picture 1.
Disassemble the CTRL BD from the RC and disassemble the FFC CTRL from the CTRL BD as picture 2.

PICTURE 1



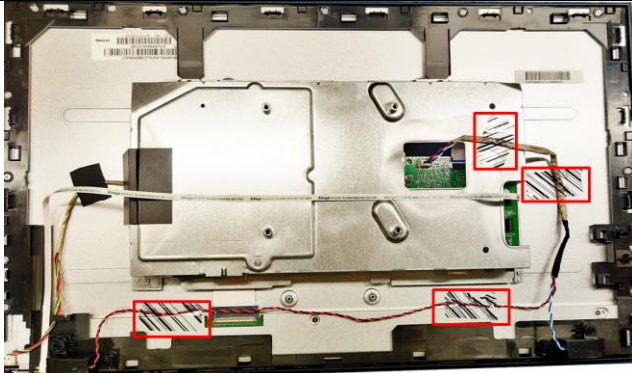
PICTURE 2



S3

Disassemble the speaker from the MF

Tear off four BOPP tapes on the speaker wire.
Extract the connect of the speaker from the PCBA.
Disassemble the speaker from the MF(Middle Frame).

**S4**

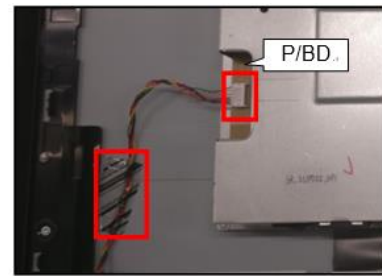
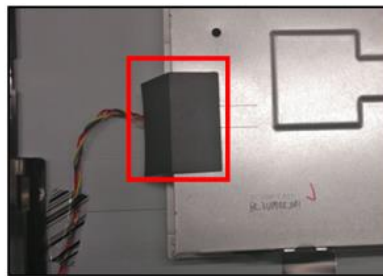
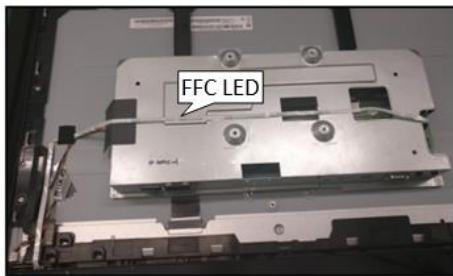
Disassemble the lamp wire

Extract the FFC LED from the I/F BD. Tear off the FFC LED from the SHD as picture 1.
Tear off the Mylar on the left hole of the SHD as picture 2.
Tear off the BOPP tape on the lamp wire and extract the lamp wire form the P/BD as picture 3.

PICTURE 1

PICTURE 2

PICTURE 3

**S5**

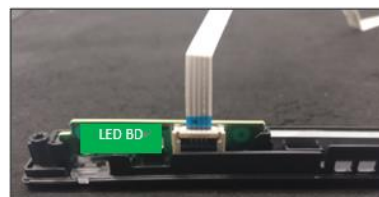
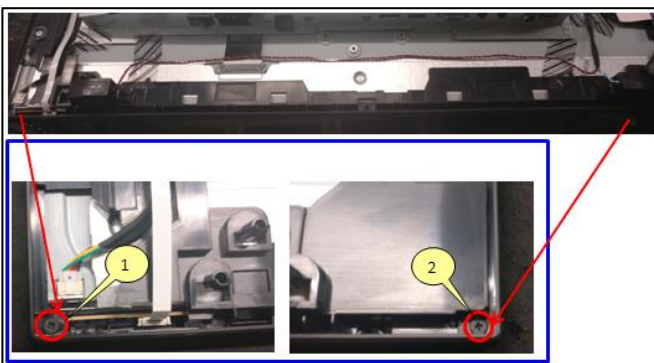
Disassemble the Trim

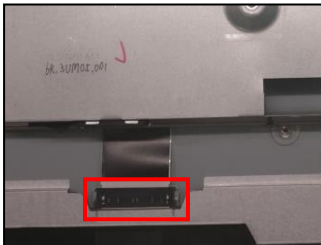

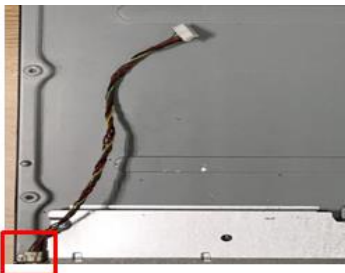
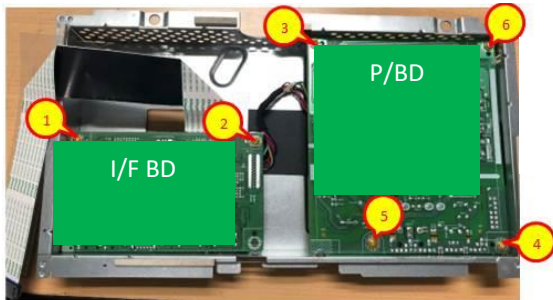
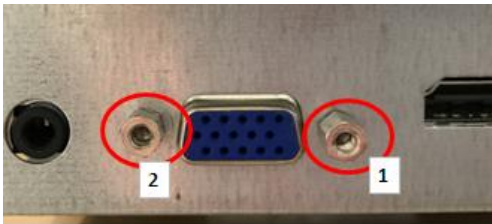
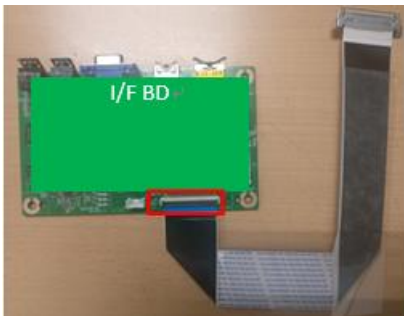
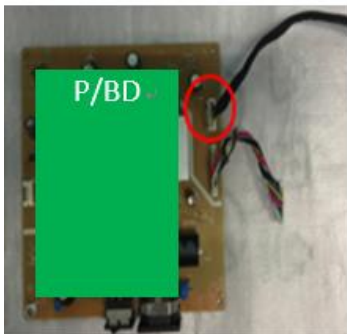

Unlock two screws from the ASSY TRIM and disassemble Trim from MF as picture 1.
Disassemble the PCBA LED BD from the ASSY TRIM as picture 2.
Disassemble FFC LED from the PCBA LED BD as picture 3

PICTURE 1

PICTURE 2

PICTURE 3



<div>S6</div> <div>Disassemble the MF from panel.</div>	<div>Extract FFC wire from the panel as picture 1.</div> <div>Unlock 9 screws from the MF as picture 2.</div> <div>Disassemble the MF from the panel and extract the lamp wire from the panel as the picture 3.</div>		
<div>PICTURE 1</div> <div></div>	<div>PICTURE 2</div> <div></div>	<div>PICTURE 3</div> <div></div>	
<div>S7</div> <div>Disassemble I/F BD and P/BD from SHD.</div>	<div>Unlock 2 hex screws from the SHD and unlock 6 PCBA screws as picture 1.</div> <div>Extract P/BD wire from the IF BD, disassemble the IF BD from the SHD, and extract the FFC from the IF BD as picture 2.</div> <div>Disassemble the P/BD from the SHD and extract P/BD wire from the P/BD as picture 3.</div>		
<div>PICTURE 1</div> <div></div> <div></div>	<div>PICTURE 2</div> <div></div>	<div>PICTURE 3</div> <div></div>	
<div></div> <div>NOTE: Circuit boards >10 cm² has been highlighted with the yellow rectangle as above image shows. Please detach the Circuit boards and follow local regulations for disposal.</div>			

4.2 Assembly Procedures

Preparation before assemble:

1. Clean the room for work
2. Identify the area for material
3. Prepare the implement, equipment, materials as bellow:
 - 1) working table
 - 2) Screw-driver: Philips-head screwdriver, Hex-head screwdriver
 - 3) Knife
 - 4) Glove
 - 5) Cleaning cloth
 - 6) ESD protection



After unplugging the power cord, the power board still have power energy. Please pay attention when disassembling/assembling.

S1

Assemble the MAIN board, power board.

Before Disassembling & Assembling, monitor need to be put on the sponge and the Insulation glove must be wore during the process.

Put the SHD on the worktable.

Assemble the P/BD to the SHD as picture 1.

Insert the FFC wire to the IF BD as picture 2.

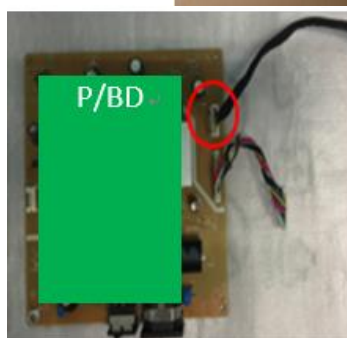
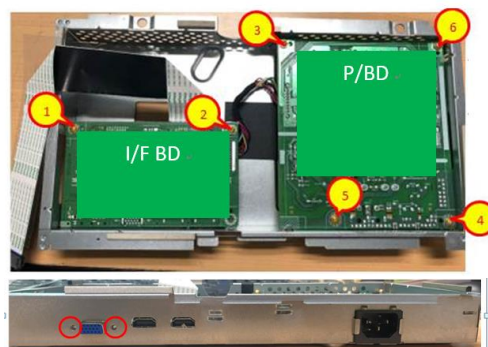
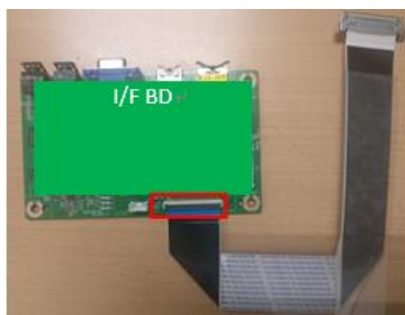
Insert the P/BD wire to the IF BD as and assemble the IF BD to the SHD as picture 3.

Lock 6 screws as the picture sequence and lock 2 hex screws from the SHD.

PICTURE 1

PICTURE 2

PICTURE 3

**S2**

Assemble the MF and panel

Take the Panel on the sponge cushion.

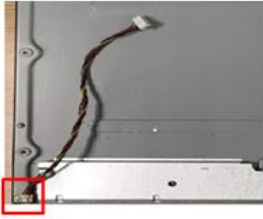
Insert the little connector of the lamp wire to panel as the picture 1, thread the lamp wire out of the hole of the MF. Assemble the MF onto the panel.

Lock 9 screws to the MF as the picture as the picture 2.

Insert the FFC wire to the Panel as the picture 3.

Assemble the SHD on the MF as the picture 4.

PICTURE 1



PICTURE 2

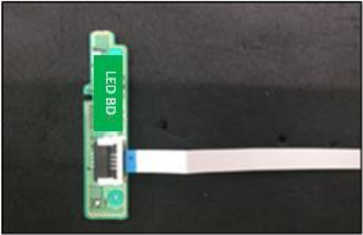
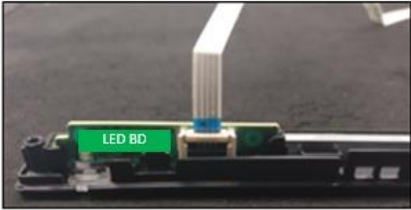

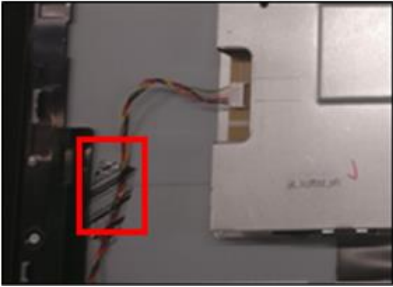
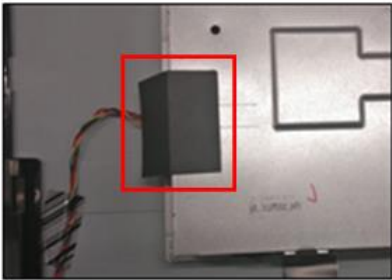
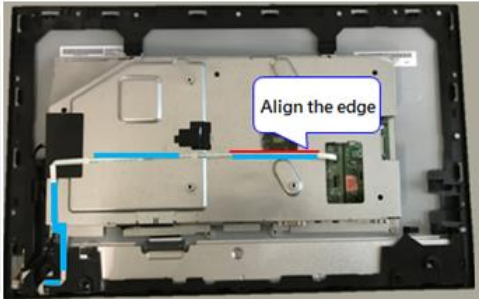
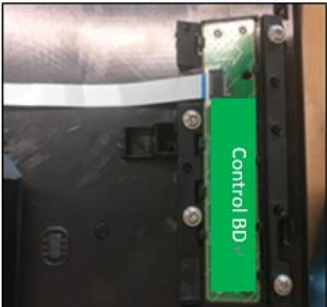
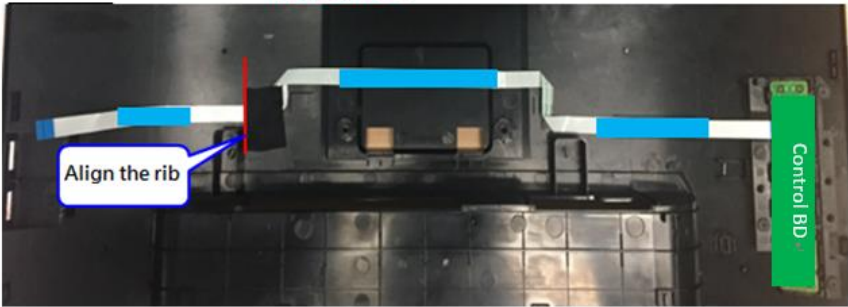


PICTURE 3

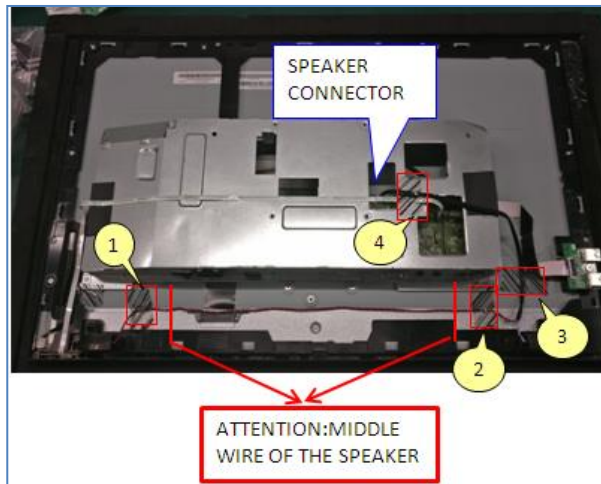


PICTURE 4



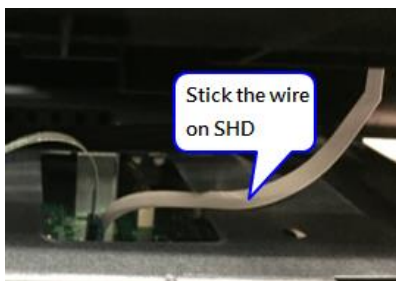
S3 Assemble the ASSY TRIM	Assemble FFC LED to the PCBA LED BD as the picture 1. Assemble the PCBA LED BD into the ASSY TRIM. Assemble the ASSY TRIM on the MF. Lock two MD screws to the ASSY TRIM.
<p>PICTURE 1</p> 	<p>PICTURE 2</p>  <p>PICTURE 3</p> 
S4 Assemble the lamp wire	Insert the big connector of the lamp wire to the P/BD. Stick 1 piece BOPP tape to fasten the lamp wire as the picture 1. Affix a Mylar on the left hole of the SHD as the picture 2. Tear off the four gums on the FFC LED, stick the FFC LED on regular mark wire on the SHD as the picture 3 and insert the FFC LED into the I/F BD
<p>PICTURE 1</p> 	<p>PICTURE 2</p>  <p>PICTURE 3</p> 
S5 Assemble the Ctrl PCBA on RC.	Assemble FFC Ctrl to the Ctrl PCBA and assemble Ctrl PCBA to the RC as picture 1. Tear off the gums on the FFC Ctrl and Stick the FFC Ctrl on the RC. Stick 1 piece adhesive tape on the point of inflexion of the FFC Ctrl as picture 2.
<p>PICTURE 1</p> 	<p>PICTURE 2</p> 

S6 Assemble the speaker on the MF	Insert the speaker connect to the I/F BD as the picture. Arrange the SPK wire on the Panel and stick 4 pieces of black tapes to fasten the SPK wire as picture. (Attention: Keep the speaker wire straight, and the middle of the speaker wire is not allowed to be placed on the step of the panel.)
---	---



S7 Assemble the RC, stand and base	Insert the FFC Ctrl into the BD. Stick the FFC Ctrl on the SHD as picture 1. Assemble the RC to the MF and Lock 1 screw as picture 2. Assemble the column and base on the RC.
--	---

PICTURE 1



PICTURE 2



NOTE: Circuit boards >10 cm² has been highlighted with the yellow rectangle as above image shows. Please detach the Circuit boards and follow local regulations for disposal.

5. Troubleshooting

TROUBLESHOOTING

Before sending your LCD monitor for servicing, please check the trouble-shooting list below to see if you can self-diagnose the problem.

(VGA Mode)

Problems	Current Status	Remedy
No Picture	LED ON	<ul style="list-style-type: none"> Using OSD, adjust brightness and contrast to maximum or reset to their default settings.
	LED OFF	<ul style="list-style-type: none"> Check the power switch.
		<ul style="list-style-type: none"> Check if AC power cord is properly connected to the monitor.
	LED displays amber color	<ul style="list-style-type: none"> Check if video signal cable is properly connected at the back of monitor. Check if the power of computer system is ON.
Abnormal Picture	Unstable Picture	<ul style="list-style-type: none"> Check if the specification of graphics adapter and monitor is in compliance which may be causing the input signal frequency mismatch.
	Display is missing, center shift, or too small or too large in display size	<ul style="list-style-type: none"> Using OSD, adjust RESOLUTION, CLOCK, CLOCK-PHASE, H-POSITION and V-POSITION with non-standard signals. Using OSD, in case of missing full-screen image, please select other resolution or other vertical refresh timing. Using OSD, in case of missing full-screen image, please select other resolution or other vertical refresh timing. Wait for a few seconds after adjusting the size of the image before changing or disconnecting the signal cable or powering OFF the monitor.
Abnormal Sound (Only Audio-Input model) (Optional)	No sound, or sound level is too low	<ul style="list-style-type: none"> Check the audio cable with the host PC is connected.
		<ul style="list-style-type: none"> Check if the volume setup of the host PC is in minimum position and try to raise the volume level.

(HDMI/DP Mode)



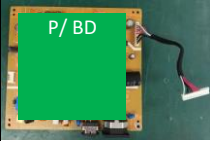

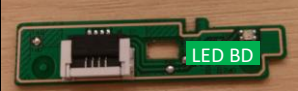
Problems	Current Status	Remedy
No Picture	LED ON	<ul style="list-style-type: none"> Using OSD, adjust brightness and contrast to maximum or reset to their default settings.
	LED OFF	<ul style="list-style-type: none"> Check the power switch.
		<ul style="list-style-type: none"> Check if AC power cord is properly connected to the monitor.
	LED displays amber color	<ul style="list-style-type: none"> Check if video signal cable is properly connected at the back of monitor.
		<ul style="list-style-type: none"> Check if the power of computer system is ON.
Abnormal Sound (Only Audio-Input model) (Optional)	No sound, or sound level is too low	<ul style="list-style-type: none"> Check the audio cable with the host PC is connected.
		<ul style="list-style-type: none"> Check if the volume setup of the host PC is in minimum position and try to raise the volume level.

6. FRU List

This chapter gives you the FRU (Field Replaceable Unit) listing in global configurations of ACER KA240Y. Refer to this chapter whenever ordering for parts to repair or for RMA (Return Merchandise Authorization).

Please note that WHEN ORDERING FRU PARTS, you should check the most up-to-date information available on your regional web or channel. For whatever reasons a part number change is made, it will not be noted on the printed Service Guide. For AUTHORIZED SERVICE PROVIDERS, your office may have a DIFFERENT part number code from those given in the FRU list of this printed Service Guide. You MUST use the local FRU list provided by your regional office to order FRU parts for repair and service of customer machines

NOTE: To scrap or to return the defective parts, you should follow the local government ordinance or regulations on how to dispose it properly, or follow the rules set by your regional office on how to return it.

Category	ACER DESCRIPTION	Description	PART NO.
LCD			
	LED LCD Panel AUO 23.8\" data-bbox="309 433 528 488">FHD None Glare M238HVN01.1Q0-Z19 250nit 3000:1 16ms	LCDM23.8 M238HVN01.1Q0 Z/G AUO	KL.23805.008
BOARD			
	MAIN BOARD 1A2H+S+L+OD	PCBA IF BD MI KA240Y AUO A2H+S	55.TS3M3.001
	POWER BOARD 1A2H+S+L+OD	PCBA SPS BD MI QG241Y VA	55.TS3M3.003
	FUNCTION KEY BOARD WITH 5-DIRECTION BUTTON W/ WIRE	PCBA CTRL BD MI VG240Y	55.TG5M3.003
	LED BOARD	PCBA LED BD MI VG240Y	55.TG5M3.004